

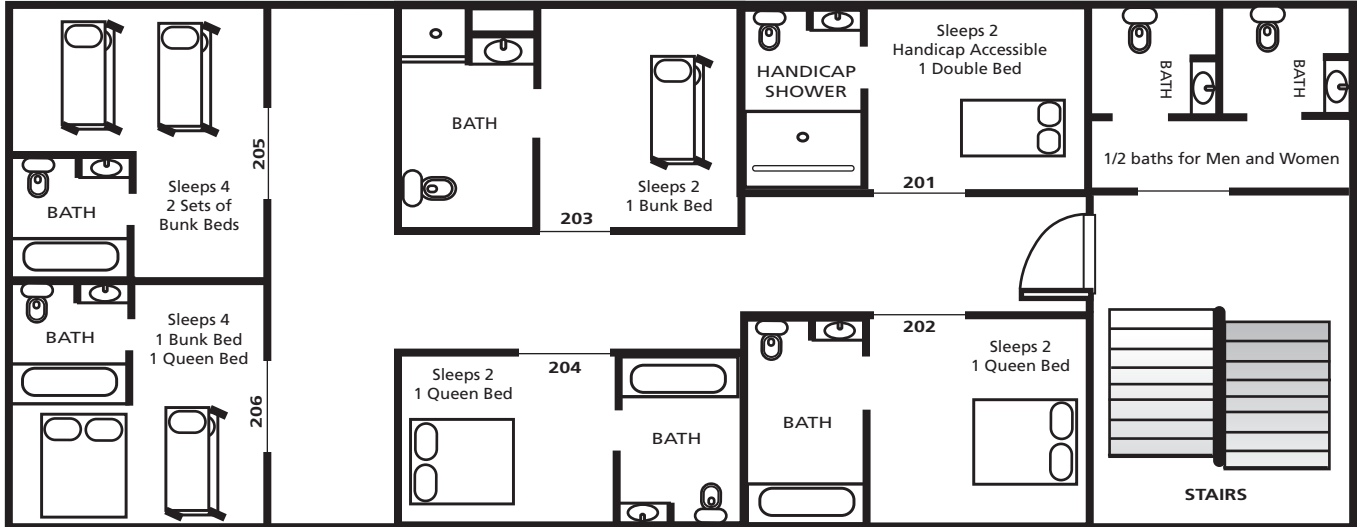
Bald Rock Group/Conference Lodge Sleeping Layout

Main Floor Sleeping Layout - 6 Bedrooms w/ 6 Private Bathrooms

Room 203 - has Shower (NO Bathtub)

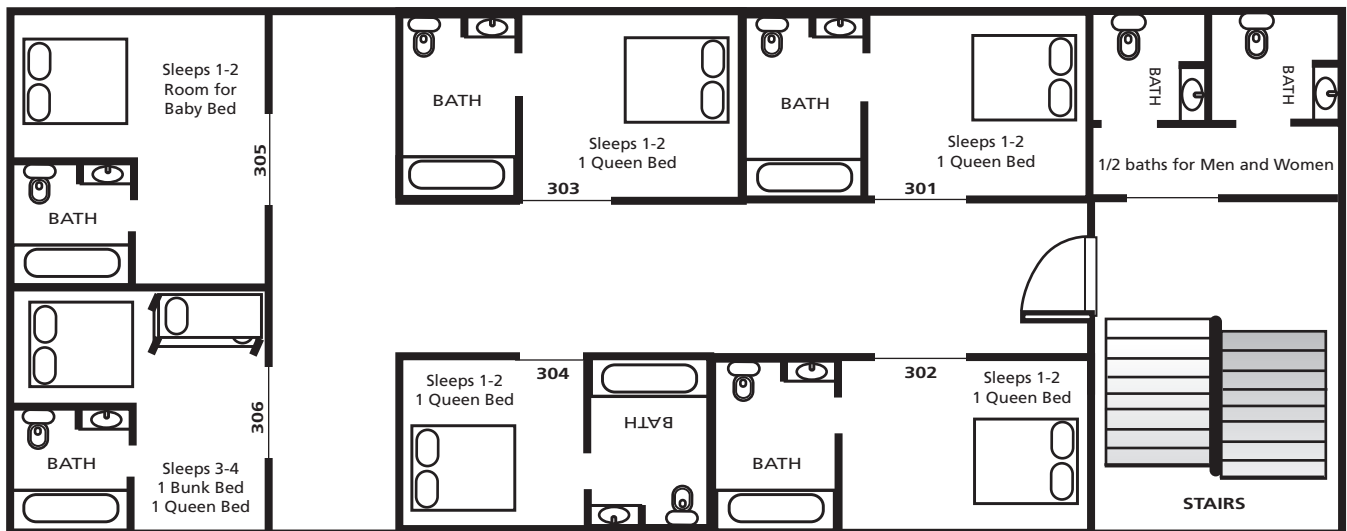
Room 201 - Handicap Accessible

*The doorway between the 1/2 baths and the hallway to the rooms has a door that locks.
Please do not close this door or it will lock you out!*



Please note: All locked doors are for maintenance staff. We charge for damage or items that have to be replaced due to unauthorized entry. Call the Motel if you need something any time of the day or night.

Bottom Floor: 6 Bedrooms w/ 6 Private Bathrooms



Door to hallway will lock if you close it. You may turn deadbolt but do not touch the handle or the door will lock and you will have to go to the office to get it to open.

Do not move any furniture in the bedrooms. We will charge you a \$75.00 fee for changing anything in any room.

We supply linen for 30 people. We exchange towels once a day. Please bring your own towels for pool or beach use. You may put air mattress or sleeping bags for more people if you would like. Just keep in mind we do not supply extra linen for these people or dishes.

Note: Top Lobby floor has 2 day beds and 2 full bathrooms.

Alabama Cheaha Resort State Park: 2141 Bunker Loop, Delta, AL 36258, **Phone:** 1-800-846-2654,

Email: Cheaha.StateParkLodge@dcnr.alabama.gov